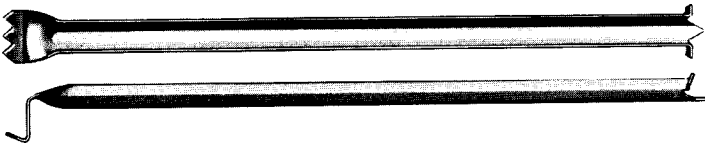


COMPRESSION BRIDGING



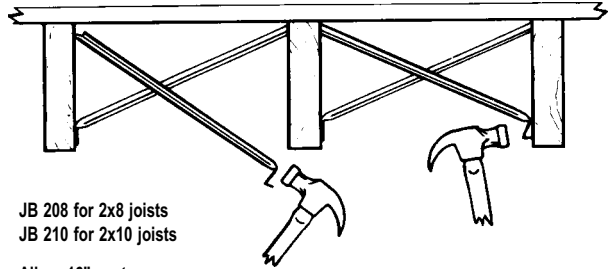
Compression Bridging installs very quickly after sub-flooring is in place. No nails required, only a hammer needed. Reduces labor cost by 75%.

Steel formed into a rigid channel shape. Single sharp barb penetrates readily at top, two ears bear cross-grain to limit penetration. Dogleg drives into joist to anchor lower end.

MATERIAL: 18 ga.

FINISH: Galvanized G60.

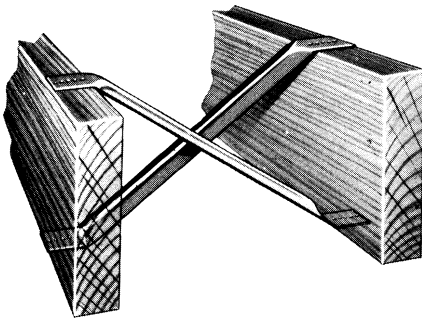
COMPRESSION CROSS BRIDGING FAST! EASY! PERMANENT!



JB 208 for 2x8 joists
JB 210 for 2x10 joists

All on 16" centers.

TENSION BRIDGING



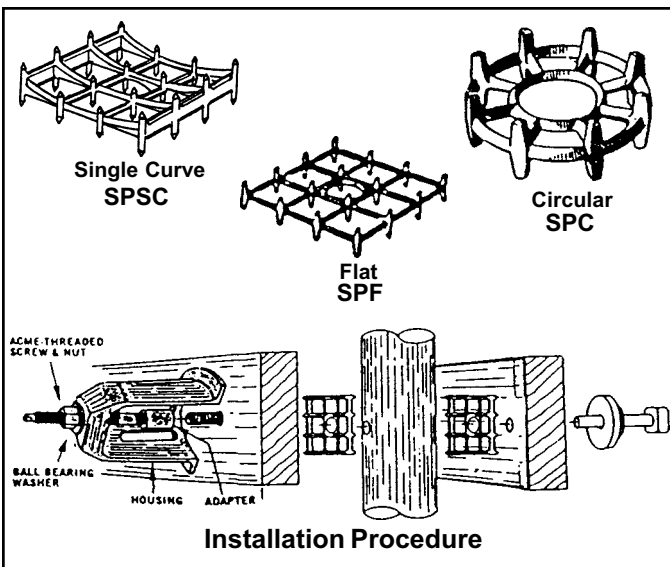
- TESTED
- STRONGER
- VERSATILE
- SAVES LABOR
- NEAT APPEARANCE

Joist Size	12" C-C	16" C-C	24" C-C
2 x 6	JB 20	JB 20	JB 27
2 x 8	JB 20	JB 20	JB 27
2 x 10	JB 20	JB 20	JB 27
2 x 12	JB 20	JB 20	JB 27
2 x 14	JB 20	JB 27	
4 x 8	JB 20	JB 20	JB 27
4 x 10	JB 20	JB 20	JB 27
4 x 12	JB 20	JB 20	
4 x 14	JB 20	JB 27	
4 x 16	JB 20	JB 27	

Joist Bridging	Steel Size	Recommended Nails Each End
JB 20E	22 ga. x 3/4"	(2) 10d

Two pieces make one X-set or pair.
All joist bridging is formed from galvanized steel.

SPIKE GRID TIMBER CONNECTOR



Spike Grids are used primarily in pole construction, docks, piling, wharves, and railroad and highway bridges or trestles. Flat and circular grids are used between sawn timbers, while single curve grids are used between round piles or poles and sawn members.

Manufactured from malleable iron in accordance with current ASTM Specification A-47, Grade 32510.

Spike Grids are available in 3 types: flat, single curve, and circular. Single curve fits between one rounded and one flat member. Circular fits between two flat or curved members. Flat fits between two flat members. Also available galvanized to ASTM A-153.

Install with grid applicator or hydraulically, cannot be installed by tightening standard nut.

Type	Size	Depth	Bolt Hole Dia.	Bolt Dia. (max.)	Lumber Min. Dimensions	
					Grid in One Face	Grid in Both Face
Flat	4-1/8" x 4-1/8"	1"	1.06	1"	1-5/8" x 5-1/2"	2-5/8" x 5-1/2"
Single Curve	4-1/8" x 4-1/8"	1.38"	1.06	1"	1-5/8" x 5-1/2"	—
Circular	3-1/4" dia.	1.20"	1.33	1"	1-5/8" x 5-1/2"	2-5/8" x 5-1/2"